

TECHNICAL BULLETIN

PRODUCT: WORCESTER PLUME MANAGEMENT KITS

FLUE TERMINALS WITHIN COVERED PASSAGEWAYS:

Further to Gas Safe Technical Bulletin 007 “Room-sealed (natural/fanned draught) and open-flued (fanned draught) appliance flues terminating within covered passageways (ginnels)” we offer additional advice relating to the use of the Worcester Bosch plume management kits in these situations:

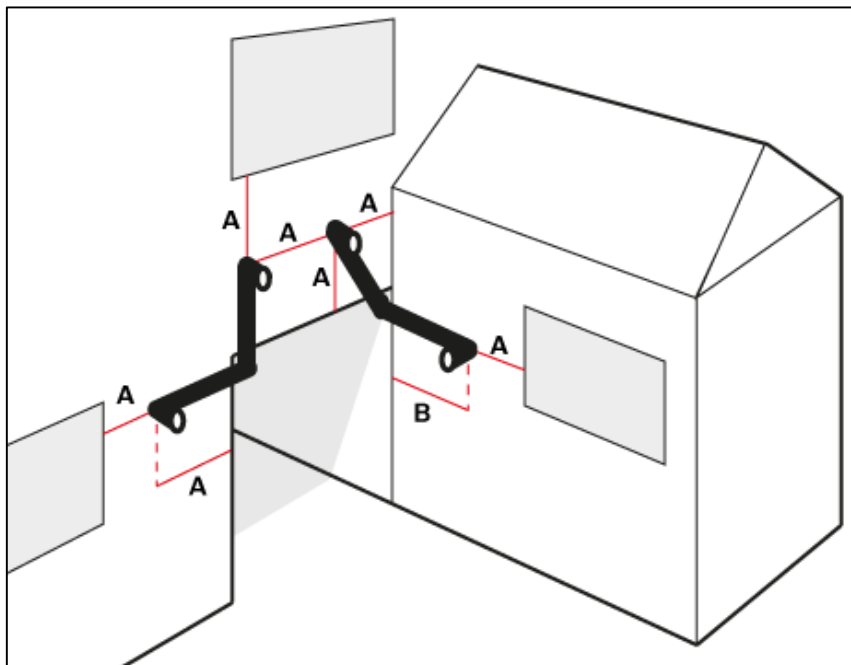
When a flue terminates within a ginnel it is permitted to use a Worcester plume management kit in conjunction with a Worcester gas or oil appliance in order to safely discharge products of combustion beyond the confines of the ginnel, providing the following criteria can be met:

Mandatory Installation Criteria:

- ▶ The ginnel must be permanently open on at least one end. A door must not be fitted at both ends of the passageway.
- ▶ If a door is fitted at one end of the passageway, then permanent ventilation of at least 5cm² per kW output of the appliance in question must be provided at the closed end of the ginnel to allow a free flow of air through the passageway.
- ▶ If the passageway continues uncovered between buildings or walls then the uncovered section of the ginnel should be treated as a 3-sided area Worcester Technical Bulletin 0073 b must be referenced for further guidance regarding acceptable terminal positions in these cases.
- ▶ Minimum clearances relating to the plume management terminal must be achieved; these are referenced in the Installation instructions for the plume management kit.

The opening of the ginnel should be considered an opening into the building and thus the terminal should be sited at least 300mm above or 600mm beyond the opening (See Fig. 1).

- ▶ If more than one plume management kit is used within the same ginnel, the plume management terminals must be separated by at least 300mm (See Fig. 1).



- A) **300mm** Clearance required
B) **600mm** Clearance required

Fig. 1 Diagram of required plume management clearances in a ginnel installation

Whilst it is always our intention to fully assist, it is essential to recognise that all information given by the company in response to an enquiry of any nature is provided in good faith and based upon the information provided with the enquiry. We recommend that advice should always be checked with your installer or contract partner. Consequently, the company cannot be held responsible for any liability relating to the use or repetition of such information or part thereof. In addition, whilst making every reasonable effort to monitor the performance and quality of our supply, installation and service network, we do not accept responsibility for the workmanship or operation of any third party company that the company may have promoted either in conversation, e-mail or other communication. Similarly, the views and opinions expressed in communication with individuals within the company may not reflect that of the business as a whole.

You can find this, and all issued technical bulletins on the Worcester website at: <http://www.worcester-bosch.co.uk/tb> or <http://www.worcester-bosch.ie/tb>